

» Lines and curves, suitable for even dirty or oily environments. «



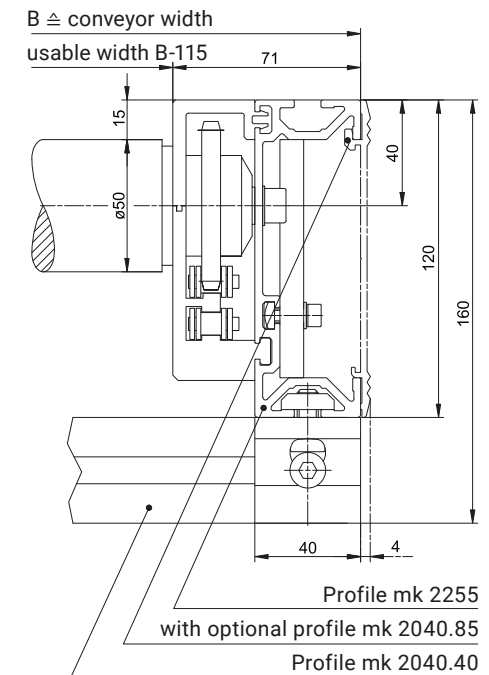
The RBT-P 2255 tangential chain roller conveyor is used wherever long conveying paths with a motorised drive mechanism are required. The conveyor is driven by a ½" chain, which runs within an enclosed, low-wear wear strip via the tangentially driven conveyor rollers from below via a sprocket wheel. This allows you to achieve conveying paths up to 10 m in length and makes the system suitable for even dirty or oily environments.

The chain tail is also equipped with idler pulleys supported by ball bearings for minimal friction losses. The tangential chain roller conveyor is available in both straight and curved configurations and can be combined with other roller conveyors (RBS and RBM). The longitudinal slots in the beam profiles can be used to attach side rails, stands, initiators and other accessories.

## Benefits of RBT-P 2255

- Driven by a tangential chain
- For transporting products of moderate weight
- For conveying paths up to 10 m long
- Suitable for even dirty or oily environments
- mk 2255 conveyor frame profile allows for combination with RBS and RBM roller conveyors
- Side slots on the conveyor frame profile for attaching accessories such as side rails, stands, etc.

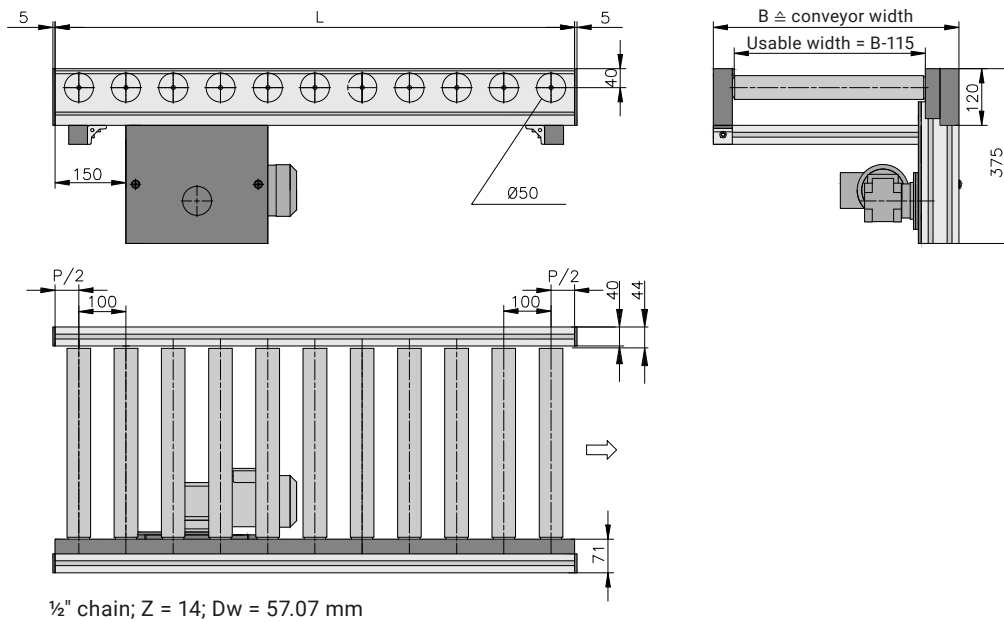
## Cross Section



Line

B61.02.003

The tangential chain roller conveyor is based on the mk 2255 profile. The anodised conveyor frame profiles are designed for a spacing of 100 mm and a roller diameter of 50 mm.



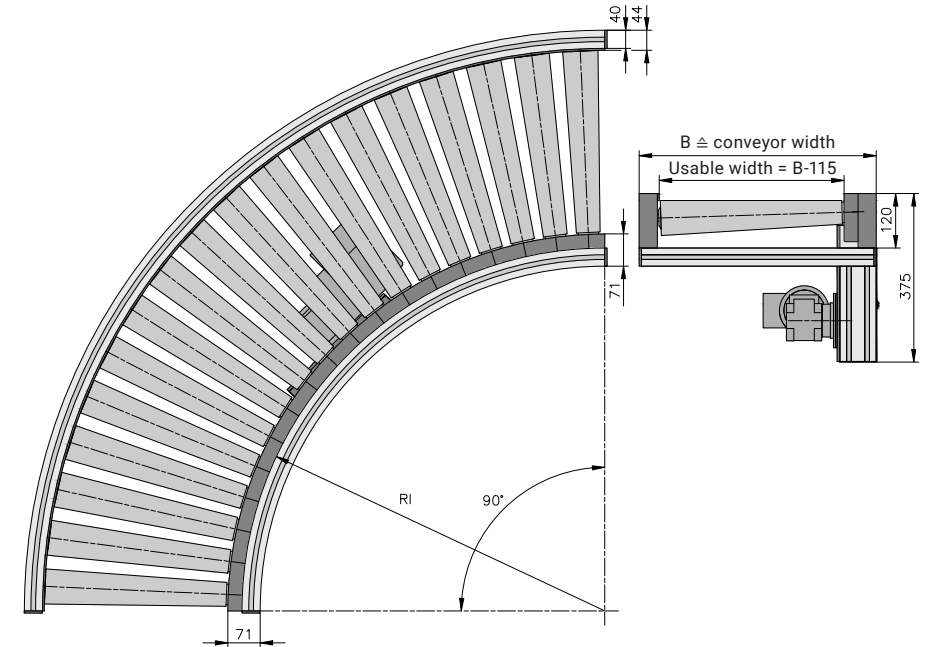
Technical data

<b>Roller diameter</b>	50 mm, made from galvanised steel	
<b>Conveyor width B</b>	320, 420, 520, 620 and 720 mm	others on request
<b>Conveyor length L</b>	600–10000 mm	others on request
<b>Spacing p</b>	100 mm (optionally 75, 150, 200)	others on request
<b>Conveyor frame profile</b>	mk 2255	
<b>Roller types</b>	type 49 and 57, 60 or 61	from p. 276
<b>Speed</b>	up to 30 m/min	p. 12
<b>Stand</b>	only with conveyor stand option option D	from p. 286
<b>Load capacity, standard</b>	depending on the conveyor width and conveyor roller, up to 100 kg/m and a total load capacity of 400 kg	higher on request

Curve

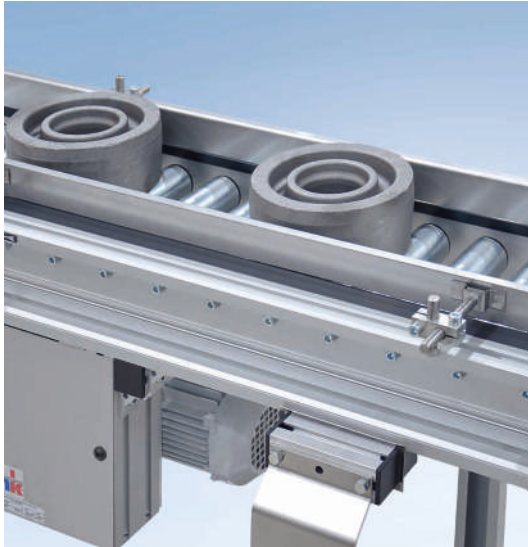
B61.02.004

The curve builds on the straight line with a cylindrical  $\varnothing 50$  mm roller. The curve is fitted with conical elements based on the radii. The speed specifications refer to the middle of the conveyor. For quiet running, the rollers in the standard version are designed with a 5% partition.



Technical data

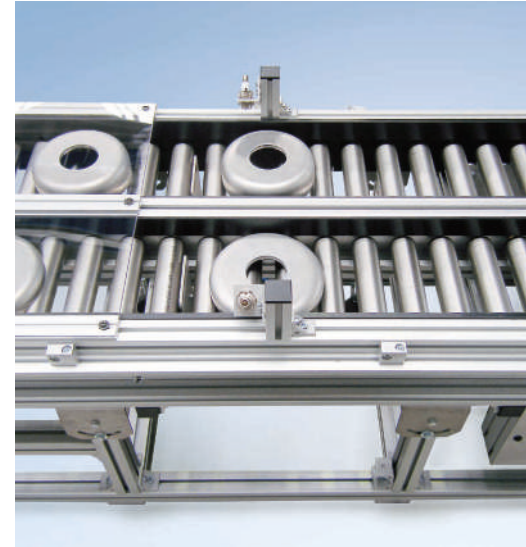
<b>Roller diameter</b>	50 mm, conical, made from plastic	
<b>Conveyor width B</b>	431, 531, 631 and 731 mm	
<b>Inner radius RI</b>	800 mm	
<b>Conveying angle</b>	90°	others on request
<b>Spacing</b>	5° increments, 18 rollers	
<b>Conveyor frame profile</b>	mk 2255	
<b>Roller types</b>	type 50	from p. 276
<b>Speed</b>	up to 30 m/min	p. 12
<b>Stand</b>	only with conveyor stand option option D	from p. 286
<b>Load capacity, standard</b>	depending on the conveyor width and conveyor roller, up to 100 kg/90°	higher on request



Tangential chain roller conveyor RBT-P 2255 with side rail SF02 type 01



Tangential chain roller conveyor RBT-P 2255 with side rail and drip pan



Tangential chain roller conveyor RBT-P 2255 as parallel provisioning conveyor for removal



Driven curved roller conveyor RBT-P 2255 90°



Tangential chain roller conveyor RBT-P 2255 with distribution switch above the conveyor



Tangential chain roller conveyor RBT-P 2255 as lifting conveyor



Tangential chain roller conveyor RBT-P 2255 with ø 50 mm steel rollers and tangential chain drive



Tangential chain roller conveyor RBT-P 2255

Custom applications from page 404