

» For cycled transport and precise positioning. «

The ZRF-P 2040 timing belt conveyor system is suited for use as a single-line conveyor for the cycled transport of piece goods. The goods can be transported conventionally or with a specific orientation.

In addition to different coatings that provide optimal gripping of the workpiece, various cams to hold the workpiece can also be attached to the surface of the timing belt, either welded on or preferably screwed on.

The system is suitable for exact conveying, feeding and positioning up to a total load of 250 kg. The system offers different timing belt widths to suit your particular application, workpiece dimensions and total load.

A feature of this conveyor system are the wear strips made from ultra-high-molecular weight polyethylene on which the timing belt runs and is guided. This material provides a low friction coefficient and excellent wear characteristics.

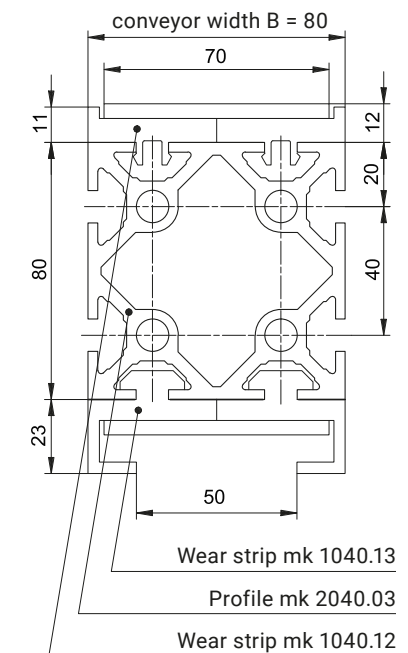
The conveyor frame profile also offers t-slots (10 mm slot width) on both sides for connection stands, side rails, initiators and stoppers.

Benefits of the ZRF-P 2040

- Cycled transport of piece goods, either conventional or orientated
- Precise conveying, feeding and positioning up to 250 kg
- Available as a single, double or multiple line conveyor
- Various belt coatings for optimal gripping of the workpiece
- Cams can be attached to hold the workpieces

Cross Section

conveyor width of 80 mm for this example, for 40, 120, 160 mm other profile

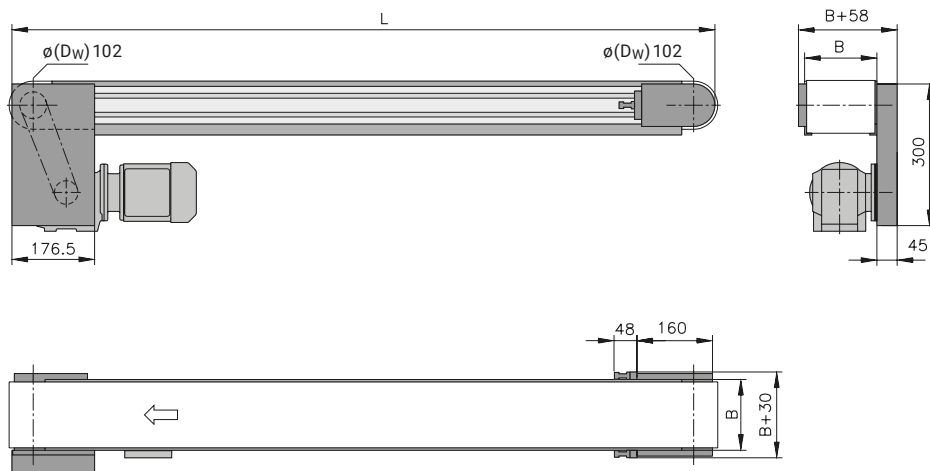




AC – Standard head drive

B20.40.301

The timing belt pulley ensures excellent transmission of the motor power. When using cams, the max. possible height must be requested.



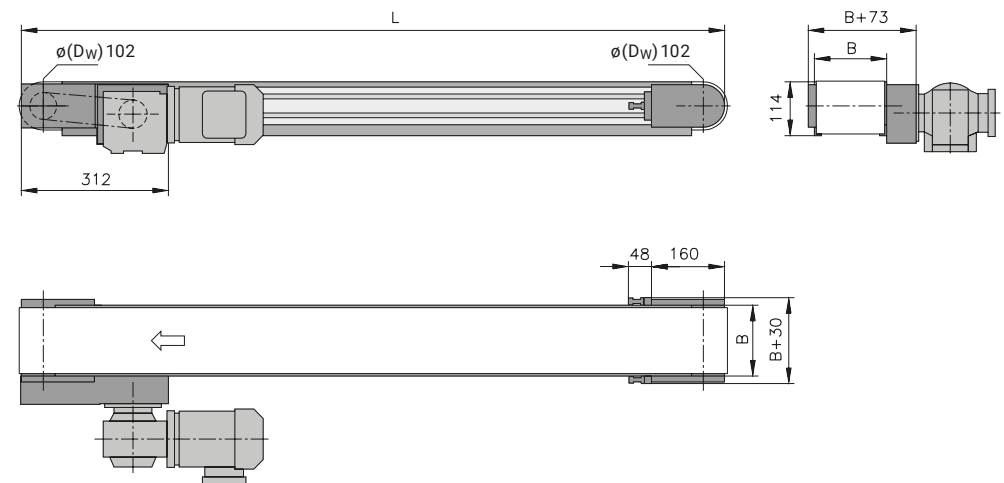
Technical data

Conveyor length L	individual from 650 to 6000 mm	
Conveyor width B	40/80/120/160 mm	others on request
Timing belt width	32/70/110/150 mm	
Timing belt type		p. 172
Drive location	discharge end left/right, underneath	
Drive and speed	up to 60 m/min, higher on request	p. 12
Stand and side rail		from p. 286
Standard total load	up to 125 kg for B = 40 mm/up to 250 kg for B = 80 mm or wider	higher on request
Standard distributed load	up to 50 kg/m for B = 40 mm/up to 100 kg/m for B = 80 mm or wider	

AS – Head drive, laterally on the outside, compact

B20.40.302

The drive positioned laterally on the outside allows the total height of the conveyor to be restricted to a minimum. The timing belt pulley ensures excellent transmission of the motor power. Use of cams is possible without restriction with this drive version.



Technical data

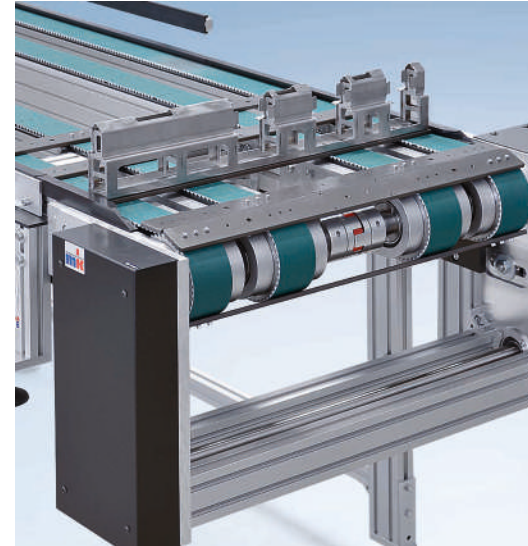
Conveyor length L	individual from 650 to 6000 mm	
Conveyor width B	40/80/120/160 mm	others on request
Timing belt width	32/70/110/150 mm	
Timing belt type		p. 172
Drive location	discharge end left/right	
Drive and speed	up to 60 m/min, higher on request	p. 12
Stand and side rail		from p. 286
Standard total load	up to 125 kg for B = 40 mm/up to 250 kg for B = 80 mm or wider	higher on request
Standard distributed load	up to 50 kg/m for B = 40 mm/up to 100 kg/m for B = 80 mm or wider	



Timing belt conveyor ZRF-P 2040 with head drive AC



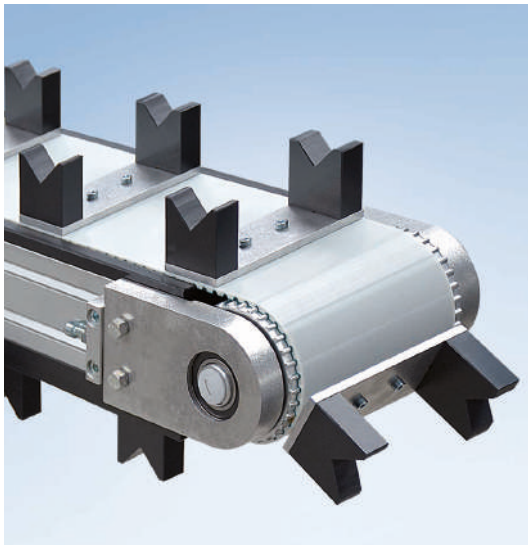
Dual-line timing belt conveyor ZRF-P 2040 with tail 13 with rolling knife edge



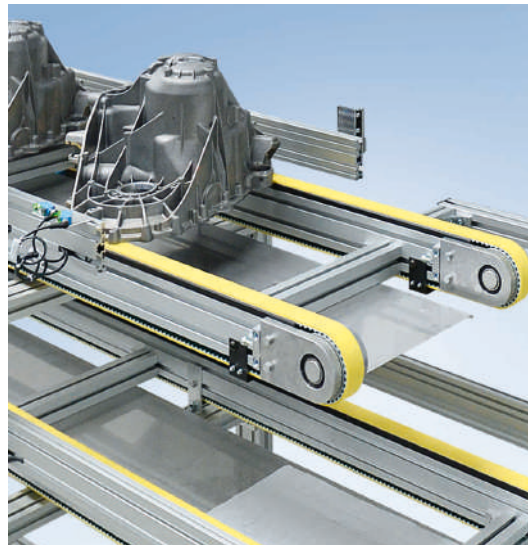
Four-line timing belt conveyor ZRF-P 2040 with bolted-on product holders



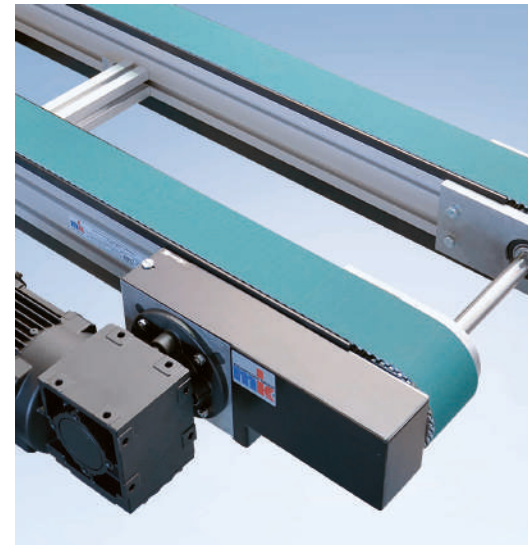
ZRF-P 2040 timing belt conveyor with drive AC and attached prisms for picking up rods



Timing belt conveyor ZRF-P 2040 with bolted-on, prism-shaped workpiece holders



Dual-line timing belt conveyor ZRF-P 2040 with side rail and controller



Dual timing belt conveyor ZRF-P 2040 with head drive AS



Three-line timing belt conveyor ZRF-P 2040 with head drive AC

Custom applications from page 404