



Move Cleaner, Smarter, Faster, Safer



mk North America, Inc.



better products. better solutions.

CleanMove is a full line of stainless steel conveyors designed for the specific needs of the food and pharmaceutical industries. CleanMove conveyors provide state-of-the-art cleanability, performance, reliability and are designed to meet food and pharmaceutical industry standards.

mk North America is a member of the mk Technology Group and a leading worldwide manufacturer of stainless steel conveyors, aluminum conveyors, pallet-handling systems, and extruded aluminum framing.

Since 1988 mk North America has been providing diverse industrial know-how, superb quality, constant innovation and application engineering excellence. mk North America. offers you a perfect solution for any application.

mk is a leader in the design and manufacture of high quality, stainless steel conveyors and low profile aluminum conveyors. Companies from almost every industry around the globe have turned to mk for solutions to their conveyor needs.

mk CleanMove

CleanMove® Conveyors are offered in two different levels of sanitary construction. Each level meets specific industry standards for their application, minimizing equipment costs. Customizations are possible, contact mk for more details.



CleanMove Standard is an excellent solution for conveying in a low moisture area where wipe down with mild detergents is required. CleanMove Standard features an all bolted stainless steel construction and is ideally suited for conveying packaged products.








CleanMove Plus is ideal for conveying in a wet area where product spillage may occur and light wash down with mild detergents may be frequent. CleanMove Plus features a combination of welded and bolted construction as well as washdown rated drives and stainless steel bearings. Supports and bearings are spaced off the frame to allow for easy cleaning behind them. Food grade contact surfaces are standard.

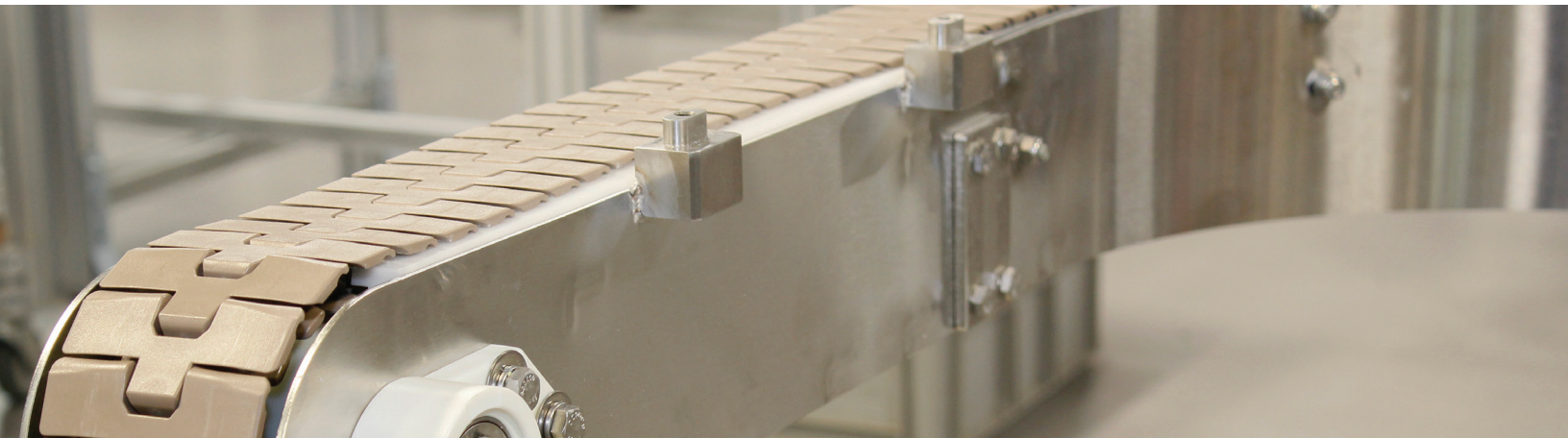
Advantages & Features:

- Sanitary stainless steel construction
- Designed to FDA, and NSF standards
- Easy to clean and maintain
- Heavy duty construction
- High quality components and materials
- Large variety of options and accessories
- Full application and engineering support
- Custom designs

Sanitary Construction Levels & Design Specifications

	CleanMove Standard	CleanMove Plus
Moisture	Dry to low moisture	Moderate to high moisture
Chemical Resistance	Wipe down with mild detergents	Wash down with mild detergents
Cleanability	Wipe down	Medium to high pressure washdown up to 1,500 psi
Material	304 stainless steel	
Finish	#4 polish exterior surfaces	
Frame Construction	Bolted	Bolted, continuous ground and polished welds
Standoffs	None	¼-inch to ½-inch thick bolted spacers
Bearing	Stainless steel ball bearing	Washdown rated with food grade grease
Motor/Gearbox	Industrial painted, wipe down	Epoxy painted or stainless steel

Pharmaceutical, Medical, Personal Care			
	Packaged	Unpackaged	
	●	●	
Baking, Snack & Confectionery			
	Packaged	Cooked	Raw
	●	●	
Fruits & Vegetables			
	Packaged	Cooked	Raw
	●	●	
Meat, Poultry & Seafood			
	Packaged	Cooked	
		●	
Dairy			
	Packaged	Processed	
	●	●	



Support

mk North America believes in supporting the customer from the initial inquiry through the delivery of the system and beyond. mk has a dedicated sales and engineering staff to manage your project. All orders include detailed 2D and 3D models for your review and approval of the entire system. mk assembles and tests all conveyor systems prior to shipping.

Customizations

mk North America believes in offering not only a better product, but also a better solution. We understand how the performance of your production line affects your business. Regardless of what makes your material handling application unique – temperature, environmental concerns, handling requirements, or space constraints – mk can provide a custom engineered conveyor solution that meets your needs and keeps your business moving.



Delicate parts are transferred from one conveyor to the next using tight nose bars and a small transfer plate.



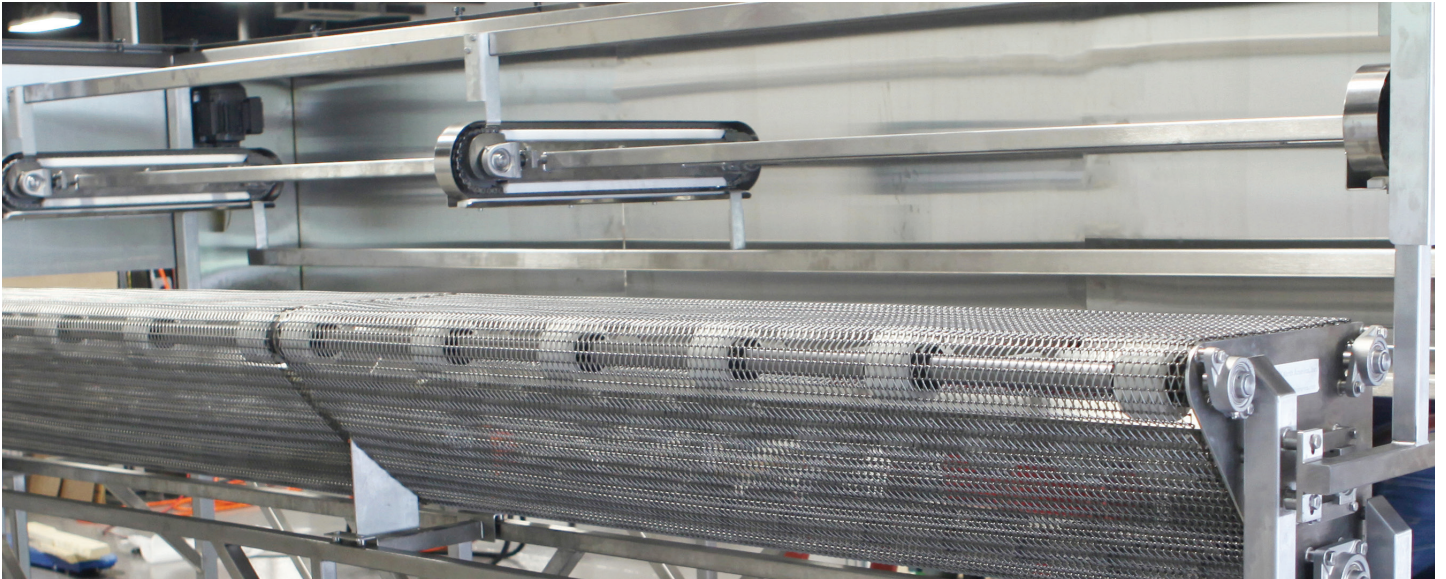
Horizontal to incline conveyors are highly customizable. The length of the horizontal and the degree of incline are unique to each application.



Plastic modular belt conveyors can be configured in a variety of layouts, including this "S-Bend."



Vertical conveyors can take product from ground level, often out of a hopper, and carry it vertically to the next stage or process.



Truly unique and one-of-a-kind conveyors are possible, such as this wide wire mesh conveyor with overhead pan sweeps.



Cleats on belts can be used for a wide variety of applications, including creating desired space between products.



Croissants travel on a curve conveyor to a wrapping station. This conveyor features removable side rails and casters.

CleanMove Standard Series 200 Overview



A CTF-200 Flat Top Chain conveyor, constructed in a multi-lane set-up.



Flat Belt conveyor CFB-200 with one fixed side rail.



A Plastic Modular Belt conveyor CMP-200 with custom side table.



A compact solution for your food and pharmaceutical packaging needs, the CleanMove Standard conveyor series offers a wide variety of conveyor platforms. With extensive belting, drive options and accessories, mk has the solution to meet your specific application.

General Specifications

- 304 stainless steel
- #4 polish exterior surfaces
- Wipe down
- Heavy duty bolted construction
- Full line of accessories, including stand supports and side rails

Applications

- Dry to low moisture environments
- Wrapped baked goods
- Packaged confections
- Can and bottle lines
- Packaged snack foods
- Beverage lines
- Packaging and wrapping lines
- Packaged pharmaceuticals



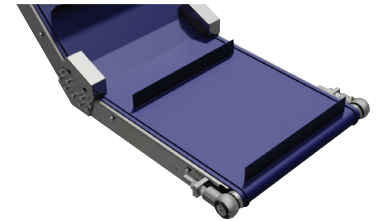
CFB-200 Flat Belt Conveyor

- 2 in. drive pulley diameter
- 2 to 36 in. frame width
- 48 ft. max frame length
- 250 fpm max speed
- 450 lbs. max load capacity



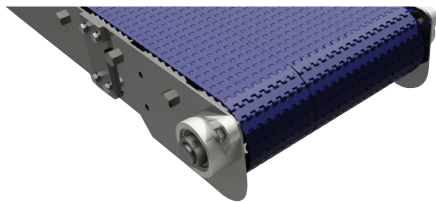
CCB-200 Cleated Belt Conveyor

- 2 in. drive pulley diameter
- 2 to 36 in. frame width
- 48 ft. max frame length
- 250 fpm max speed
- 450 lbs. max load capacity



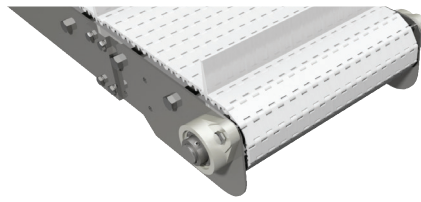
CIC-200 Incline Belt Conveyor

- 3 in. drive pulley diameter
- 6 to 36 in. frame width
- 60 ft. max frame length
- 150 fpm max speed
- 400 lbs. max load capacity



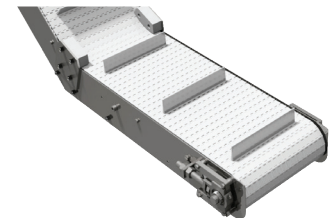
CMP-200 Plastic Modular Belt Conveyor

- 3.9 in. drive pulley diameter
- 4 to 48 in. frame width
- 60 ft. max frame length
- 250 fpm max speed
- 1,000 lbs. max load capacity



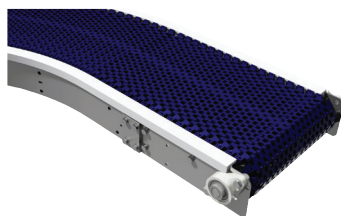
CCM-200 Cleated Plastic Modular Belt Conveyor

- 3.9 in. drive pulley diameter
- 4 to 48 in. frame width
- 60 ft. max frame length
- 250 fpm max speed
- 1,000 lbs. max load capacity



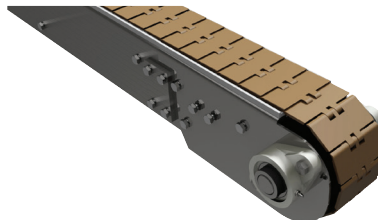
CIM-200 Incline Plastic Modular Belt Conveyor

- 3.9 in. drive pulley diameter
- 6 to 24 in. frame width
- 48 ft. max frame length
- 150 fpm max speed
- 250 lbs. max load capacity



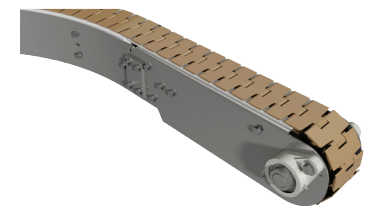
CRM-200 Curved Plastic Modular Belt Conveyor

- 3.5 in. drive pulley diameter
- 6 to 24 in. frame width, 2 in. increments
- 60 ft. max frame length
- 250 fpm max speed
- 500 lbs. max load capacity



CTF-200 Straight Flat Top Chain Conveyor

- 5.09 in. drive pulley diameter
- 3.25, 4.5, 6, 7.5, 10 and 12 in. chain widths
- 60 ft. max frame length
- 150 fpm max speed
- 1,200 lbs. max load capacity



CRF-200 Curved Flat Top Chain Conveyor

- 5.09 in. drive pulley diameter
- 3.25, 4.5, 7.5, 10 and 12 in. chain widths
- 40 ft. max frame length
- 150 fpm max speed
- 800 lbs. max load capacity

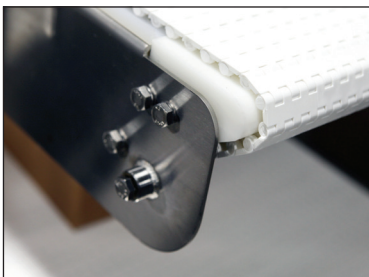
CleanMove Plus Series 400 Overview



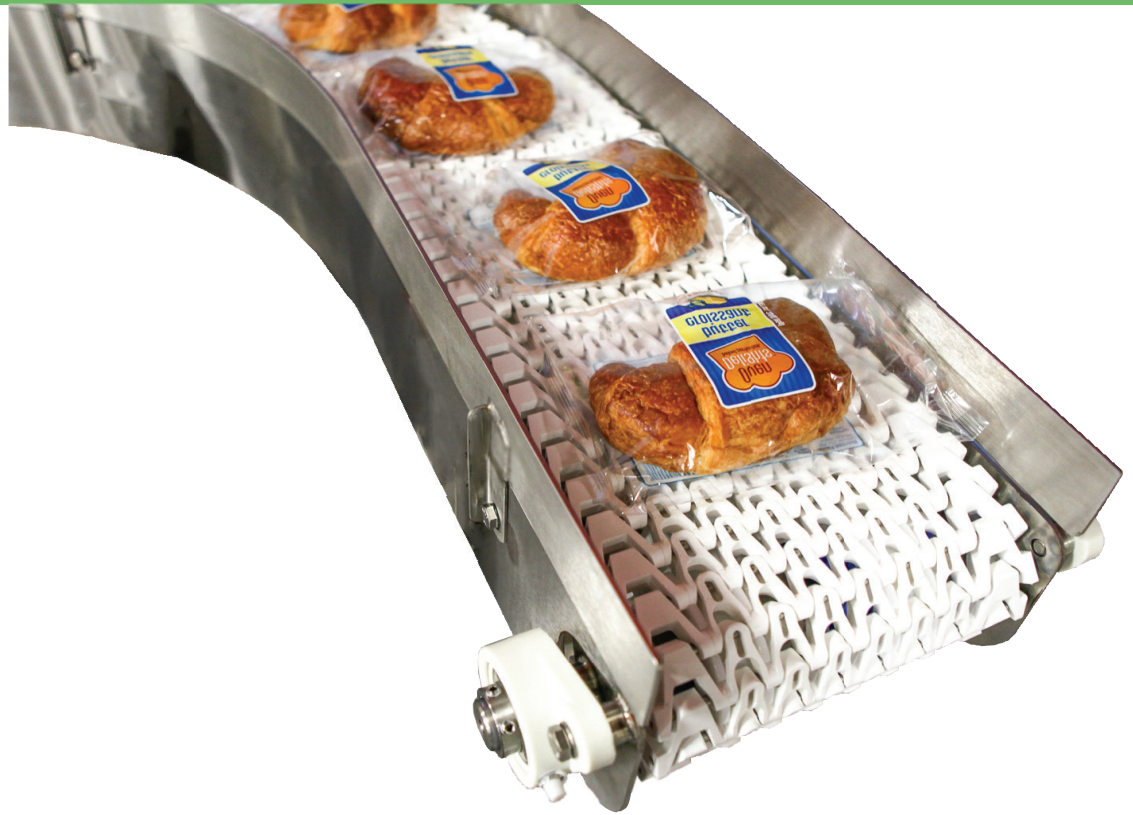
Sanitary bearings ensure hygienic moving parts.



Belt can easily be lifted or removed to clean the frame underneath.



Conveyors can be customized in a wide variety of ways.



The CleanMove Plus is a very versatile conveyor series designed to operate in most sanitary environments. CleanMove Plus offers a wide variety of conveying platforms, belting options and accessories.

General Specifications

- Medium to high pressure washdown, up to 1,500 psi
- Chlorinated cleaners
- Robust 304 stainless steel construction
- #4 polish exterior surfaces
- ¼-inch to ½-inch standoffs, welded
- Polymer bearings with stainless steel insert and FDA approved solid lubricant
- Full line of accessories including support stands and side rails
- Designed to FDA and NSF

Applications

- Open package pharmaceuticals
- Candies and confectioneries
- Bakery goods
- Can and bottle lines
- Fruits and vegetables
- Packaged cooked meat, poultry, seafood and dairy
- Moderate to high moisture environments
- Moderate to high use of caustic chemicals and cleaners



CFB-400 Flat Belt Conveyor

- 3 in. drive pulley diameter
- 4 to 36 in. frame width
- 60 ft. max frame length
- 250 fpm max speed
- 300 lbs. max load capacity



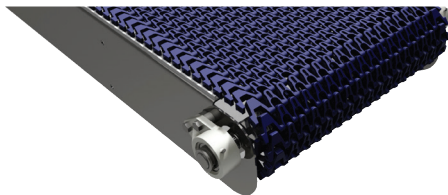
CCB-400 Cleated Belt Conveyor

- 3 in. drive pulley diameter
- 4 to 36 in. frame width
- 60 ft. max frame length
- 250 fpm max speed
- 300 lbs. max load capacity



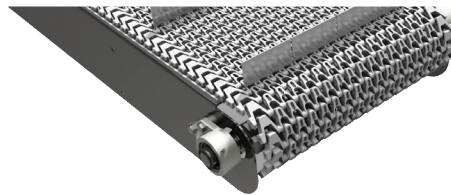
CIC-400 Incline Belt Conveyor

- 3 in. drive pulley diameter
- 6 to 24 in. frame width
- 48 ft. max frame length
- 150 fpm max speed
- 400 lbs. max load capacity



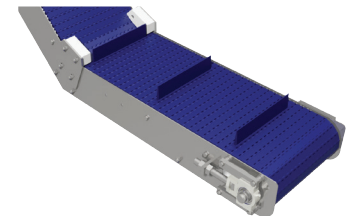
CMP-400 Plastic Modular Belt Conveyor

- 5.1 in. drive pulley diameter
- 4 to 48 in. frame width
- 60 ft. max frame length
- 250 fpm max speed
- 1,000 lbs. max load capacity



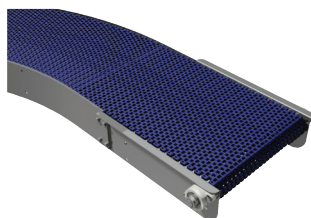
CCM-400 Cleated Plastic Modular Belt Conveyor

- 5.1 in. drive pulley diameter
- 4 to 48 in. frame width
- 60 ft. max frame length
- 250 fpm max speed
- 1,000 lbs. max load capacity



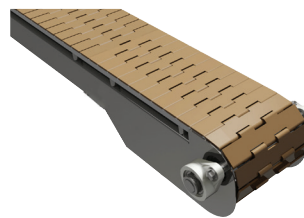
CIM-400 Incline Plastic Modular Belt Conveyor

- 5.1 in. drive pulley diameter
- 6 to 48 in. frame width
- 60 ft. max frame length
- 150 fpm max speed
- 400 lbs. max load capacity



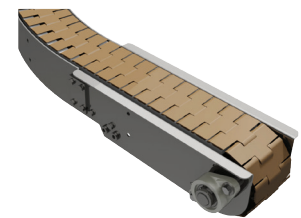
CRM-400 Curved Plastic Modular Belt Conveyor

- 3.5 in. drive pulley diameter
- 6 to 36 in. frame width, 2 in. increments
- 60 ft. max frame length
- 250 fpm max speed
- 500 lbs. max load capacity



CTF-400 Straight Flat Top Chain Conveyor

- 5.09 in. drive pulley diameter
- 3.25, 4.5, 6, 7.5, 10 and 12 in. chain widths
- 60 ft. max frame length
- 150 fpm max speed
- 1,200 lbs. max load capacity



CRF-400 Curved Flat Top Chain Conveyor

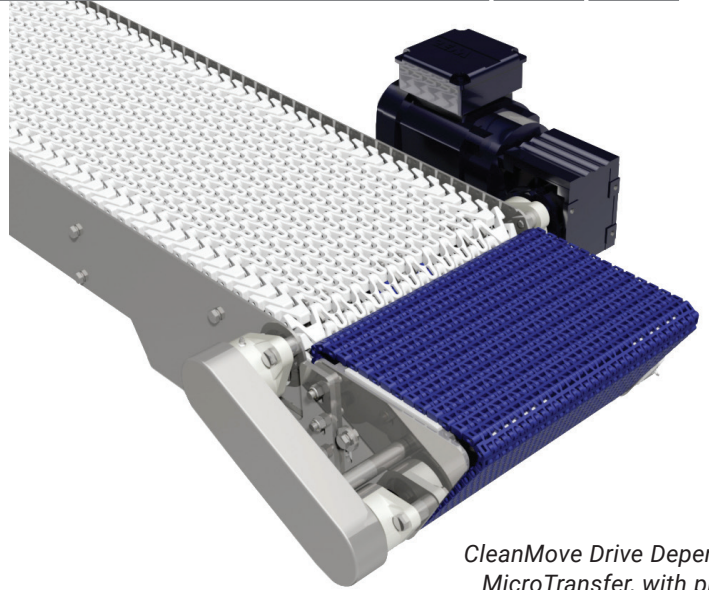
- 5.09 in. drive pulley diameter
- 3.25, 4.5, 7.5, 10 and 12 in. chain widths
- 40 ft. max frame length
- 150 fpm max speed
- 800 lbs. max load capacity

Transfers

MicroTransfer

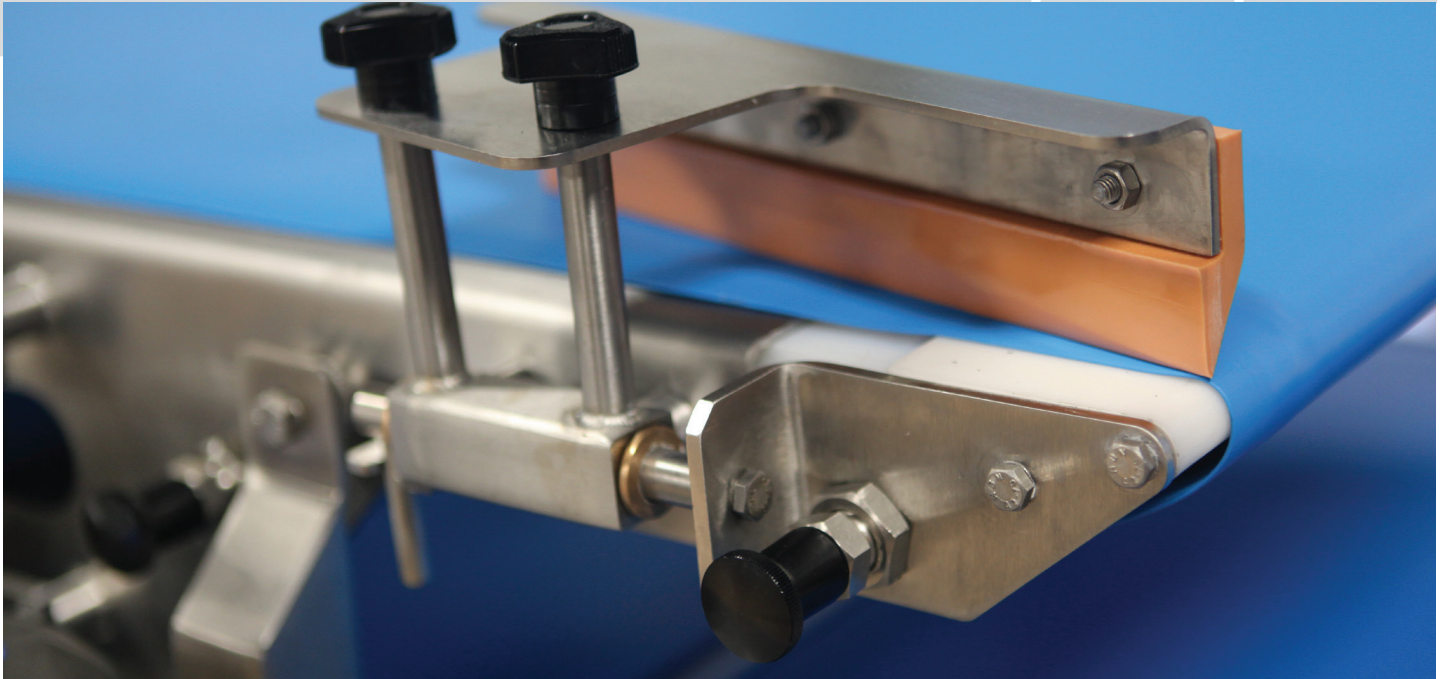
MicroTransfers from mk North America are excellent at transferring small or unstable product between conveyors that have larger diameter sprockets or pulleys.

mk North America offers three types of MicroTransfers – fabric belt, plastic modular belt or wire mesh chain. They are available dependent-driven or as motorized units. The transfers are designed around the CleanMove Plus series. Customizable in width and length, mk has a transfer solution for most applications.

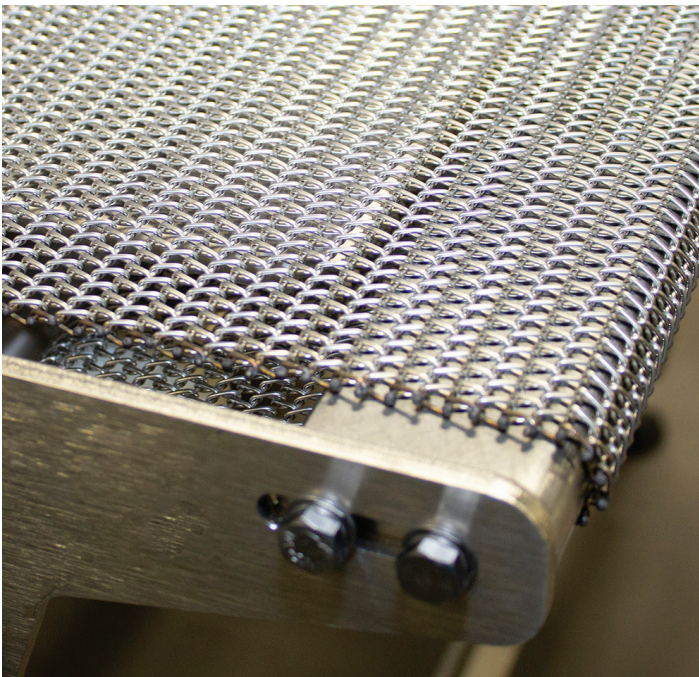


*CleanMove Drive Dependent
MicroTransfer, with plastic
modular belt shown.*





This nose bar features a quick release mechanism, which allows for easy cleaning. A belt scraper keeps the belt edges clean.



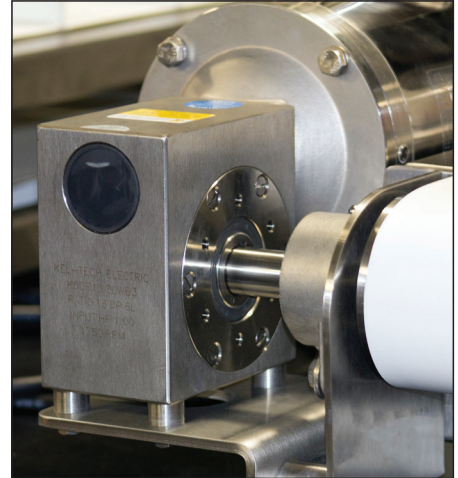
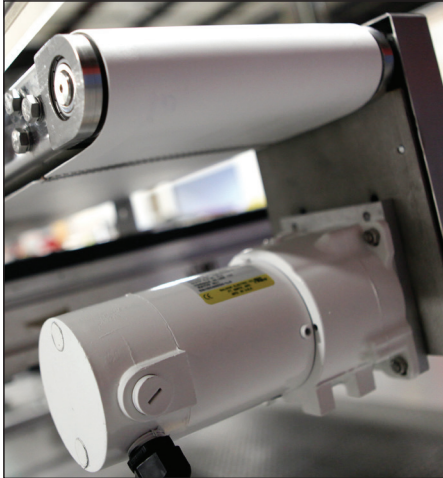
Tight nose transfers come in a variety of styles and belting materials, including this wire mesh belt.



Tight nose bars allow for the most delicate products to easily transfer between conveyors.

Motors & Controls

Motors



mk North America's standard offering includes motors and gearheads from various worldclass suppliers. They are offered in two different levels of cleanability to correspond to the two levels of CleanMove series conveyors. Customers are welcome to mix and match motor sanitation levels with different conveyor sanitation levels.

- Industrial motors, gearheads and garmotors for CleanMove Standard series
- Epoxy painted, washdown rated motors, gearheads and garmotors for CleanMove Plus series
- Motor types can be mixed and matched with any CleanMove series
- A wide variety of voltages available including; 115 AC 1 Ph, 230 and 460 AC 3 Ph
- A number of inverter duty motors are available
- DC motors with 115 AC speed controls are available for CleanMove Standard and Plus series

Controls

CleanMove conveyors are available with or without controls, and can be configured to meet specific needs. Controls are available to meet all standard North American voltage requirements.

- mk North America offers a variety of speed controls and inverters to be used with various motors
- Controllers are Nema 12 through Nema 4x
- DC voltage motors require the use of a speed control to operate
- AC motors are inverter duty but do not require the use of an inverter
- In all instances customers are welcome to provide their own controls

Belts & Chains

All of mk's CleanMove conveyors can include food-grade approved belting. Whether your application requires a homogeneous, synthetic fabric belt, plastic modular belting, positive drive belting or flat top chain, mk is certain to have the right belting for your application. Shown here are a few examples of the belts we offer and many are available with

Fabric Belt



- Food approved belting available
- Many belts available with sealed edges to reduce contamination of belt core
- Specialty belts for x-ray, ovens and dough processing available
- Belt splices include all FDA approved options – endless finger, endless step, stainless steel lacing or plastic lacing
- Cleats/flights and sidewalls are available
- Cleats/flights from 0.25 to 3-inches tall
- Sidewalls up to 3-inches tall
- Customer specified cleat spacing
- Belts are typically white or blue in color

Plastic Modular Belt



- Food approved belting available
- Damaged or worn segments of belting can be replaced, instead of replacing the entire belt, reducing costs and downtime
- Open and closed belt surfaces available
- Open belts are ideal for moist applications as well as for cooling and drainage
- Cleats/flights and sidewalls are available
- Cleats/flights up to 6-inches tall
- Stainless steel and a variety of plastic pins available for most belt types
- Allows for use of a Clean In Place system for continuous cleaning of belting

Positive Drive Belt



- Food approved belting
- A smooth, homogeneous surface without crevices which helps prevent bacteria buildup
- No ply or edge fraying
- Simple and hygienic construction
- This belt is lighter, quieter, easier to install with minimal pretension with a long operating life

Flat Top Chain

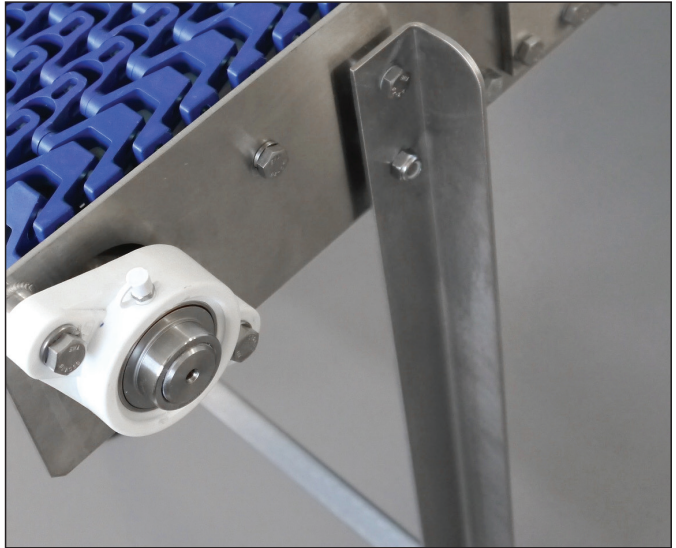


- Food approved chains, including a variety of plastics and stainless steel available
- Specialty chains featuring roller tops or friction inserts are available
- Chain industry standard widths
- Straight running and side-flexing options

Accessories

Support Stands

mk offers a variety of different stands designed to meet the specific needs of the CleanMove conveyor levels. Many stands are available with leveling pads or casters.



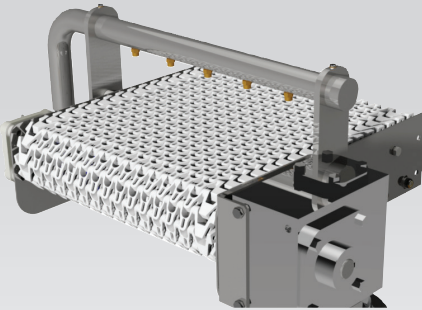
Side Rails

mk offers both fixed and adjustable side rails. For adjustable side rails, mk offers a variety of different uprights and three different horizontal rail options.



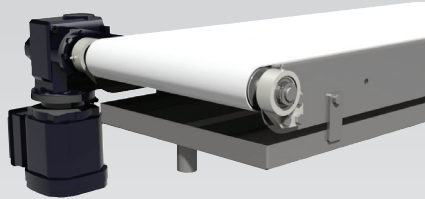
Conveyor Add-ons

Spray System



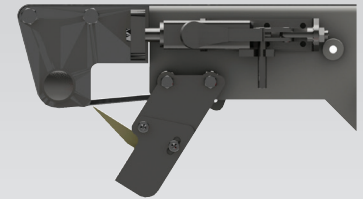
Clean-in-Place spray systems are designed to clean the chain of a plastic modular belt conveyor. These can be placed above or within the

Drip Pan



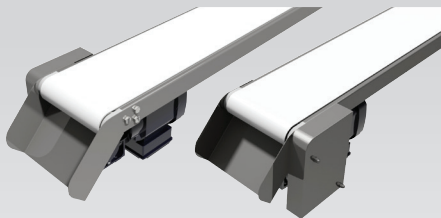
Stainless steel drip pans can be added for a variety of uses including collecting liquids and particulates that fall from the product.

Belt Scraper



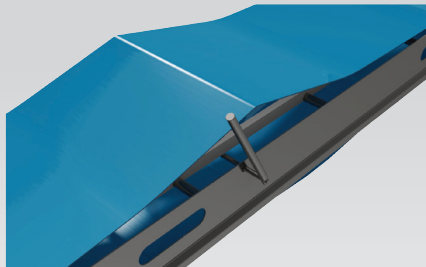
Food grade urethane belt scrapers are designed to remove product build-up from the belt and help release products better.

Chute



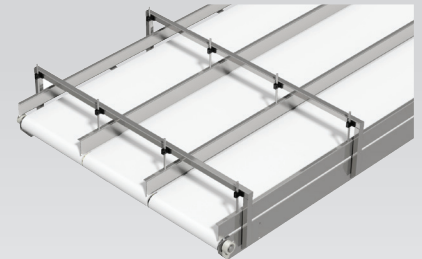
Stainless steel chutes are designed to feed product onto or off of the conveyor.

Belt Lifter



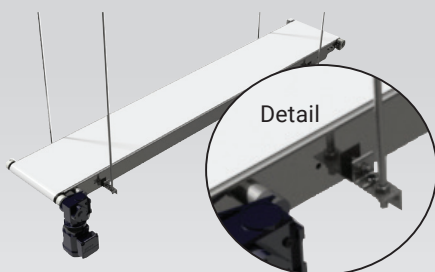
Belt lifters are designed to easily lift the belt off the conveyor surface for a fast and effective way to clean the inside of the frame.

Lane Divider



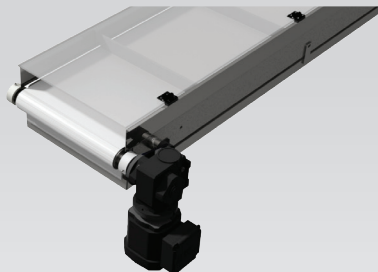
Adjustable or non-adjustable lane dividers are used to group product into lanes. Constructed of stainless steel or food grade plastic.

Ceiling Support



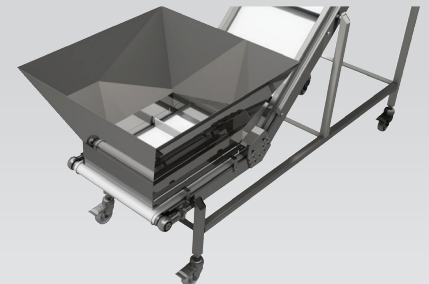
Stainless steel ceiling supports can be provided with or without drop rods; ideal for conveying at high elevations.

Conveyor Cover



Covers can be provided for any of our conveyors, and come in clear polycarbonate or stainless steel versions.

Hopper



Hoppers are ideal in applications where large quantities of product need to be metered out, guided and moved onto the conveyor.

www.mkcleanmove.com



mk North America, Inc.
an mk Technology Group Company
105 Highland Park Drive
Bloomfield, CT 06002, USA
Phone: (860) 769-5500
www.mknorthamerica.com
sales@mknorthamerica.com